



# Universal cylinders

## with threaded body, single and double acting



### Table of contents

1	Description of the product	1
2	Validity of the documentation	1
3	Target group of this document	1
4	Symbols and signal words	2
5	For your safety	2
6	Application	2
7	Installation	3
8	Start up	5
9	Maintenance	5
10	Trouble shooting	6
11	Accessory	6
12	Technical characteristics	6
13	Storage	6
14	Disposal	7
15	Declaration of manufacture	8

### 1 Description of the product

ROEMHELD universal cylinders are particularly suitable, due to their high force density, as design components in machine and apparatus construction and mould construction.

Functions as clamping, supporting, locking, riveting, bending, moving, lifting, pulling, etc. are possible.

These universal cylinders have a threaded body, the hydraulic connection is exclusively effected at the cylinder bottom by hydraulic pipes or hoses.

### 2 Validity of the documentation

This document applies to the following products:

Universal cylinders of data sheet B 1.309. The following types or part numbers are concerned:

- 1311-005, -006, -025, -026, -205, -206, -225, -226
- 1313-005, -006, -025, -026
- 1314-105, -106, -125, -126
- 1315-005, -006, -025, -026
- 1316-005, -006, -025, -026
- 1317-005, -006, -035, -036
- 1341-105, -106, -165, -166, -195, -196, -305, -306, -365, -366, -395, -396
- 1343-105, -106, -165, -166, -195, -196
- 1344-105, -106, -165, -166, -195, -196
- 1345-105, -106, -165, -166, -195, -196
- 1346-105, -106, -165, -166, -195, -196
- 1347-105, -106, -175, -176, -195, -196

### 3 Target group of this document

- Specialists, fitters and set-up men of machines and installations with hydraulic expert knowledge.

#### Qualification of the personnel

**Expert knowledge** means that the personnel must

- be in the position to read and completely understand technical specifications such as circuit diagrams and product-specific drawing documents,
- have expert knowledge (electric, hydraulic, pneumatic knowledge, etc.) of function and design of the corresponding components.

An **expert** is somebody who has due to its professional education and experiences sufficient knowledge and is familiar with the relevant regulations so that he

- can judge the entrusted works,
- can recognize the possible dangers,
- can take the required measures to eliminate dangers,
- knows the acknowledged standards, rules and guidelines of the technology.
- has the required knowledge for repair and mounting.

## 4 Symbols and signal words

### **WARNING**

#### **Person damage**

Stands for a possibly dangerous situation.  
 If it is not avoided, death or very severe injuries will result.

### **CAUTION**

#### **Easy injuries / property damage**

Stands for a possibly dangerous situation.  
 If it is not avoided, minor injuries or material damages will result.



#### **Hazardous to the environment**

The symbol stands for important information for the proper handling with materials that are hazardous to the environment.  
 Ignoring these notes can lead to heavy damages to the environment.

### **Note**

This symbol stands for tips for users or especially useful information. This is no signal word for a dangerous or harmful situation.

## 5 For your safety

### 5.1 Basic information

The operating instructions serve for information and avoidance of dangers when installing the products into the machine as well as information and references for transport, storage and maintenance.

Only in strict compliance with these operating instructions, accidents and property damages can be avoided as well as trouble-free operation of the products can be guaranteed.

Furthermore, the consideration of the operating instructions will:

- avoid injuries
- reduce down times and repair costs,
- increase the service life of the products.

### 5.2 Safety instructions

The product was manufactured in accordance with the generally accepted rules of the technology.

Observe the safety instructions and the operating instructions given in this manual, in order to avoid personal damage or material damage.

- Read these operating instructions thoroughly and completely, before you work with the product.
- Keep these operating instructions so that they are accessible to all users at any time.
- Pay attention to the current safety regulations, regulations for accident prevention and environmental protection of the country in which the product will be used.
- Use the ROEMHELD product only in perfect technical condition.
- Observe all notes on the product.
- Use only accessories and spare parts approved by the manufacturer in order to exclude danger to persons because of not suited spare parts.
- Respect the intended use.
- You only may start up the product, when it has been found that the incomplete machine or machine, in which the product shall be mounted, corresponds to the country-specific provisions, safety regulations and standards.

- Perform a risk analysis for the incomplete machine, or the machine.  
 Due to the interactions between the product and the machine/fixture or the environment, risks may arise that only can be determined and minimized by the user, e.g. :  
 - generated forces,  
 - generated movements,  
 - Influence of hydraulic and electrical control,  
 - etc.

## 6 Application

### 6.1 Intended use

The products are used in industrial / commercial applications to transform hydraulic pressure into movement and /or force. They must only be operated with hydraulic oil.

Furthermore the following belongs to possible uses:

- Use within the capacity indicated in the technical characteristics.
- Use as per operating instructions.
- Compliance with service intervals.
- Qualified and trained personnel for the corresponding activities.
- Mounting of spare parts only with the same specifications as the original part.

### 6.2 Misapplication

#### **WARNING**

#### **Injuries, material damages or malfunctions!**

Modifications can lead to weakening of the components, reduction in strength or malfunctions.

- Do not modify the product!

The use of these products is not permitted:

- For domestic use.
- For the use on fun fairs and in amusement parks.
- In food processing or in areas with special hygiene regulations.
- In mines.
- In ATEX areas (in explosive and aggressive environments, e.g. explosive gases and dusts).
- If chemically acting media damage the seals (seal material durability) or components and thereby functional failure or premature failure could occur.

For deviating operating and environmental conditions, e.g.:

- Higher operating pressures or flow rates than indicated on the data sheet or installation drawing.
- With hydraulic fluids that do not correspond to the specifications.

#### **Side load acting on the piston rod**

The application of side loads to the piston rod as well as the use of the product as a guiding element is inadmissible.

**Special solutions are available on request!**

## 7 Installation

### **⚠ WARNING**

#### **Injury by high-pressure injection (squirting out of hydraulic oil under high pressure)!**

Improper connection can lead to escapes of oil under high pressure at the connections.

- Mounting or dismounting of the element must only be made in depressurised mode of the hydraulic system.
- Connection of the hydraulic line as per DIN 3852/ISO 1179.
- Unused connections have to be locked professionally.
- Use all mounting holes.

#### **Injury by high-pressure injection (squirting out of hydraulic oil under high pressure)!**

Wear, damage of the seals, ageing and incorrect mounting of the seal kit by the operator can lead to escapes of oil under high pressure.

- Before using them make a visual control.

#### **Poisoning due to contact with hydraulic oil.**

Wear, damage of the seals, aging and incorrect mounting of the seal kit by the operator can lead to escapes of oil.

Incorrect connection can lead to escapes of oil at the ports.

- For handling with hydraulic oil consider the material safety data sheet.
- Wear protection equipment.

### **⚠ CAUTION**

#### **Malfunction or early failure**

Side loads and forced conditions acting on the piston lead to increased wear.

- Provide external guides.
- Avoid forced conditions (overdetermination) of the piston.

### **ℹ NOTE**

#### **Vent connection**

- If there is a possibility that aggressive cutting lubricants and coolants penetrate through the sintered metal air filter into the interior of single-acting products, a vent hose has to be connected and be placed in a protected position.
- It is absolutely necessary to follow the instructions for venting of the spring area see data sheet G0.110.

### 7.1 Design

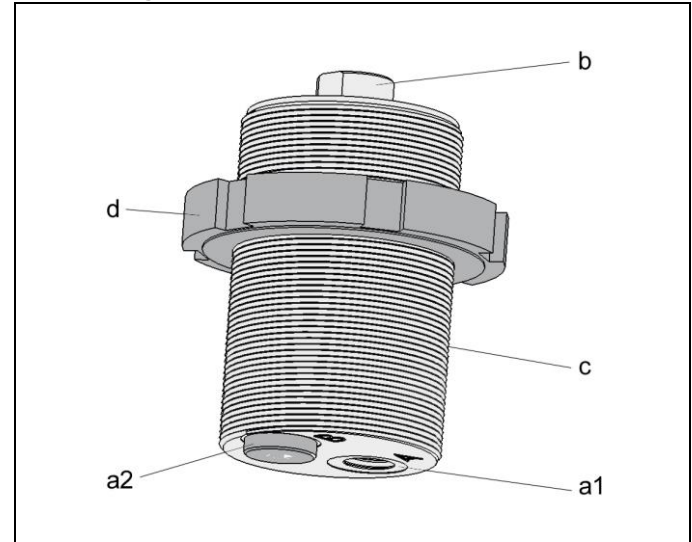


Figure 1: Components

a1 Hydraulic port (A extend)	b Piston rod
a2 Hydraulic port (B retract), bleeding by plug with sintered metal air filter (for s.a. version)	c Fixing possibilities
	d Lock nut

### 7.2 Mounting types

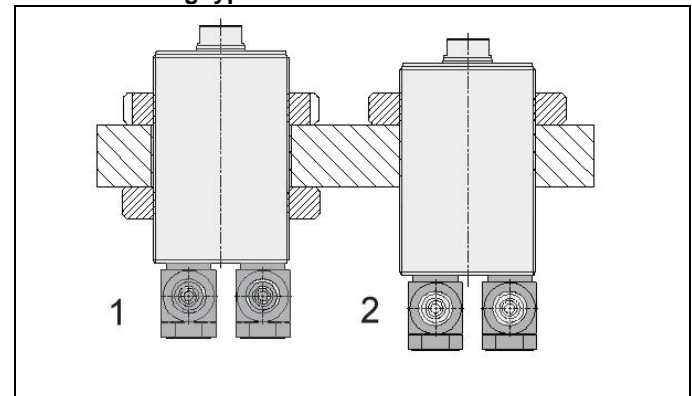


Figure 2: Fixing possibilities

1 In through hole, locked with two collar nuts	2 Screwed in, locked with collar nut
--	--------------------------------------

### 7.3 Admissible oil flow rate

### **⚠ WARNING**

#### **Injury due to overload of the element**

High-pressure injection (squirting out of hydraulic oil under high pressure) or flying components!

- Due to throttling or closing of ports a pressure intensification can occur.
- Connect the ports professionally!

### **⚠ CAUTION**

#### **Malfunction or early failure**

Exceeding the max. flow rate can lead to overload and premature failure of the product..

- The maximum flow rate must not be exceeded!

### 7.3.1 Calculation of the admissible flow rate

#### Admissible flow rate

The admissible flow rate or the admissible stroke speed is valid for vertical mounting positions in combination with standard add-on parts as clamping arms or contact bolts, etc. In case of other mounting positions and/or add-on parts the flow rate has to be reduced.

If the pump flow rate divided by the number of elements is larger than the admissible flow rate of one element, the flow rate has to be throttled.

This prevents an overload and therewith an early failure.

The flow rate can be checked as follows:

$$Q_P \leq 0,06 \cdot \dot{V}_Z \cdot n \quad \text{and/or} \quad Q_P \leq 6 \cdot v_Z \cdot A_K \cdot n$$

for clamping elements and work supports (indicated on the data sheets)

#### Maximum piston speed

At specified pump flow rate  $Q_P$  and with the effective piston area  $A_K$  the piston speed can be calculated as follows:

$$v_m < \frac{Q_P}{6 \cdot A_K \cdot n}$$

#### Legend

$\dot{V}_Z$  = Admissible flow rate of the element in [cm<sup>3</sup>/s]

$Q_P$  = Flow rate of the pump in [l/min]

$A_K$  = Piston area in [cm<sup>2</sup>]

$n$  = Number of elements, same dimensions

$v_Z = v_m$  = Admissible/maximum stroke speed in [m/s]

#### NOTE

##### Flow rate

- The maximum oil volume and/or the maximum stroke speed depend on the corresponding product.
  - For clamping cylinders see data sheet A 0.100.
  - For clamping elements, work supports, hydraulic valves, power units and other hydraulic elements indicated on the corresponding data sheets.

Further "things worth knowing about hydraulic cylinders, basics, detailed knowledge and calculations on hydraulic cylinders" see Technical information on the internet!

### 7.3.2 Throttling of the flow rate

The throttling always has to be effected in the supply line to the element. Only thus pressure intensification and thereby pressures exceeding the operating pressure are avoided. The hydraulic circuit diagram shows flow control valves which allow oil return from the element without any impediments.

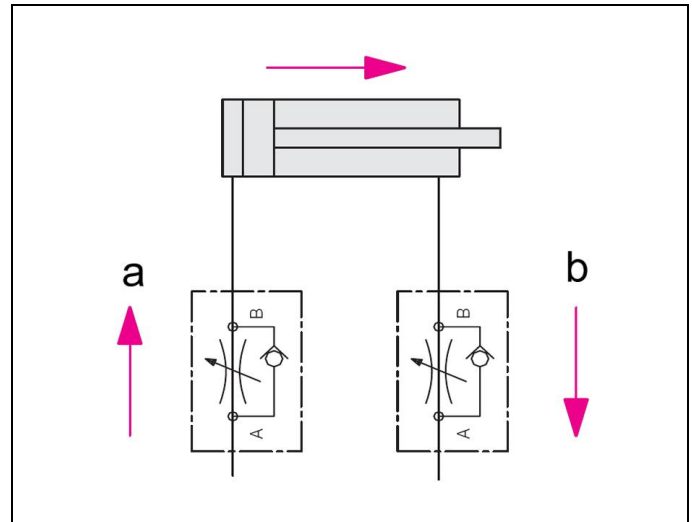


Figure 3: Hydraulic circuit diagram without flow control valves

a Throttling direction	b Free flow
------------------------	-------------

If a return-flow throttling is required due to a negative load, it must be guaranteed that the max. operating pressure (see technical characteristics) will not be exceeded.

### 7.4 Screwing into the fixture

#### WARNING

##### Injury by crushing!

Due to protruding components there can be pinch points during installation.

- Keep hands and fingers away from pinch points!



**For works at and with the product, wear protective gloves!**

- Cut thread into the fixture and lock the product with a lock nut
- or
- Put into a through bore hole and tighten with two lock nuts

### 7.5 Connection of the hydraulic equipment

#### CAUTION

##### Work by qualified personnel

- Works only to be effected by authorised personnel.

- Connect hydraulic lines to qualifying standards and pay attention to scrupulous cleanness (A = Extend, B = Retract)!

#### NOTE

##### More details

- See ROEMHELD data sheets A 0.100, F 9.300, F 9.310 and F 9.360.

##### Screwed Plug

- Use only fittings "screwed plug B and E" as per DIN 3852 (ISO 1179).

##### Hydraulic connection

- Do not use sealing tape, copper rings or coned fittings.

##### Pressure fluids

- Use hydraulic oil as per ROEMHELD data sheet A 0.100.

## **NOTE**

### **Connection of the hydraulic**

Further connection data, plans or similar (e. g. hydraulic, electric circuit diagrams or electrical parameters) see enclosures!

### **7.6 Leakage due to the system**

The piston rod is set in motion by the hydraulic oil to perform the clamping task.

The hydraulic oil must be sealed at the piston rod to the atmosphere. During extension of the piston rod, the hydraulic oil must remain in the cylinder.

For ROEMHELD products, sealing systems are used for the piston rod, generally consisting of several sealing elements. Those sealing systems enable the sealing points to be absolutely leak-proof in the total specified pressure area, when the system is not in operation. Neither does oil escape at the piston rod, nor is oil transferred from the piston side and piston rod side.

**Important:** ROEMHELD products do not leak oil when static. To ensure an adequate working life, the sealing systems must be lubricated by the hydraulic fluid while in motion, in dynamic operation. Since the hydraulic fluid must reach the sealing lip, a certain amount of oil is lost from leakage, in the process. According to the used sealing and the corresponding application conditions the amount can be very different depending on the product group. However the leakage should be very little (see A 0.100 General characteristics of hydraulic equipment).

**Leakage-free cylinders (leakage re-circulation or special sealing) are available on request.**

## **8 Start up**

### **WARNING**

#### **Poisoning due to contact with hydraulic oil.**

Wear, damage of the seals, aging and incorrect mounting of the seal kit by the operator can lead to escapes of oil.

Incorrect connection can lead to escapes of oil at the ports.

- For handling with hydraulic oil consider the material safety data sheet.
- Wear protection equipment.

#### **Injury by crushing!**

Components of the product make a movement while they are in operation, this can cause injuries.

- Keep parts of the body and items out of the working area!

### **CAUTION**

#### **Injury due to bursting or malfunction**

Exceeding the max. operating pressure (see technical data) can cause the product to burst or malfunction.

- The maximum operating pressure must not be exceeded.
- If necessary, avoid overpressure by using suitable valves.

1. Check tight seat.
2. Check tight seat of the hydraulic ports (check tightening torque of the hydraulic ports).
3. Bleed the hydraulic system.

## **NOTE**

### **Clamping time**

- Without bleeding the clamping time will be considerably prolonged and function problems may occur.

### **8.1 Bleeding of manifold-mounted types**

1. Loosen carefully the bleeding screws of the fixture at low pressure.
2. Pump until bubble free oil comes out.
3. Fasten the bleeding screws.
4. Check correct function.
5. Check sealing of the hydraulic connections!

## **9 Maintenance**

### **WARNING**

#### **Burning due to hot surface!**

During operation, surface temperatures on the product can exceed 70°C.

- Maintenance and repair work should only be performed in a cooled down condition and/or with protective gloves.

#### **Injury by crushing!**

Due to the stored energy, an unexpected start of the product can occur.

- Maintenance works at the product must only be made in de-pressurised mode!
- Keep hands and other parts of the body out of the working area!

### **9.1 Cleaning**

#### **CAUTION**

#### **Material damage, damage to moving components**

Damage to piston rods, plungers, bolts, etc., as well as wipers and seals can lead to leakage or premature failure!

- Do not use cleaning agents (steel wool or similar) that cause scratches, marks or the like.

#### **Material damage, damage or functional failure**

Aggressive cleaning agents can cause damage, especially to seals.

The product must not be cleaned with:

- corrosive or caustic substances or
- organic, solvents such as halogenated or aromatic hydrocarbons and ketones (cellulose thinner, acetone, etc.).

The product must be cleaned at regular intervals, especially the area of the piston or the plunger housing has to be cleaned from swarf and other liquids.

In the case of heavy contamination, the cleaning has to be made in shorter intervals.

### **9.2 Regular checks**

1. Check tightness of hydraulic connections (visual control).
2. Check running surfaces (of the piston rod or bolt) if there are marks and scratches. Traces of marks can be an indication for a contaminated hydraulic system or an inadmissible side load of the block cylinder.
3. Leakage check at the housing - piston rod, bolt or flange.
4. Clamping force control by pressure control.
5. Check if the maintenance intervals are kept.

### **9.3 Exchange seal kit**

The exchange of the seal kit is made in case of external leakages. For high availability, the seals have to be changed at the latest after 500,000 cycles or 2 years.

The seal kit is available as spare part. An instruction for the exchange of the seal kit is available on request.

## NOTE

### Seal Kits

- Do not install seal kits which were exposed to light for a longer time.
- Pay attention to the storage conditions (see chapter "Technical characteristics").
- Only use original seals.

## 10 Trouble shooting

Trouble	Cause	Remedy
Piston does not extend:	hydraulic oil supply or return is impeded	check and blow through pipes or channels.
Piston extends jerkily:	air in the hydraulic system	hydraulic bleeding
System pressure reduces:	hydraulic port un-tight	seal
	wear at the seals	replace seals
	backing-up pressure in the return line too high	eliminate backing-up pressure, use double-acting cylinder, if required
	return spring broken	repair required
Single acting, piston does not retract	body corroded in the inside	exchange hydraulic cylinder

## 11 Accessory

### NOTE

#### Accessories

- See data sheet.

## 12 Technical characteristics

### General characteristics

Type	Maximum operating pressure [bar]	Maximum force to push [kN]	Maximum force to pull [kN]
1311-XXX	500	10	*)
1313-XXX	500	24.5	*)
1314-XXX	500	40.2	*)
1315-XXX	500	62.8	*)
1316-XXX	500	98.5	*)
1317-XXX	500	156.0	*)
1341-XXX	500	10.0	6.1
1343-XXX	500	24.5	14.5
1344-XXX	500	40.2	24.5
1345-XXX	500	62.8	38.3
1346-XXX	500	98.5	57.9
1347-XXX	500	156.0	93.0

\*) with spring return

### Weights

#### Single acting with spring return

Types	1311-2XX	1311-0XX
Stroke [mm]	8/20	8/20
Weight [kg]	0.78/1.07	0.67/1.13

Types	1313-XXX	1314-XXX
Stroke [mm]	8/20	10/20
Weight [kg]	0.88/1.28	1.38/1.75

Types	1315-XXX	1316-XXX
Stroke [mm]	10/20	12/20
Weight [kg]	1.93/2.52	2.87/3.67

Types	1317-XXX
Stroke [mm]	12/25
Weight [kg]	4.51/5.98

### Double acting

Types	1341-3XX	1341-1XX
Stroke [mm]	16/50/100	16/50/100
Weight [kg]	0.77/1.04/1.59	0.66/1.10/1.68

Types	1343-XXX	1344-XXX
Stroke [mm]	20/50/100	25/50/100/160/200
Weight [kg]	0.85/1.21/1.81	1.32/1.63/2.38

Types	1345-XXX	1346-XXX
Stroke [mm]	25/50/100	25/50/100
Weight [kg]	1.84/2.34/3.35	2.75/3.39/4.67

Types	1347-XXX
Stroke [mm]	30/63/100
Weight [kg]	4.25/5.42/6.73

The indicated weights can deviate according to the version.  
Further data see data sheet B 1.309.

### NOTE

#### Further information

- For further technical data see ROEMHELD data sheet. B1309

## 13 Storage

### CAUTION

#### Damage due to incorrect storage of components

In case of improper storage, the seals can embrittle and resinification of the anti-corrosive oil or corrosion on/in the element can occur.

- Storage in the packaging and moderate environmental conditions.
- The product must not be exposed to direct sunlight, since UV light may cause serious damage to the seals.

The elements are tested by default with mineral oil. The exterior of the elements is treated with a corrosion inhibitor.

The oil film remaining after the test provides for a six-month interior corrosion protection, if stored in dry and uniformly tempered rooms.

For longer storage times, the element has to be filled with a non-resinifying corrosion inhibitor and the outside surfaces must be treated.

## 14 Disposal



### **Hazardous to the environment**

Due to possible environmental pollution, the individual components must be disposed only by an authorised expert company.

The individual materials have to be disposed as per the existing regulations and directives as well as the environmental conditions.

Special attention has to be drawn to the disposal of components with residual portions of hydraulic fluids. The instructions for the disposal at the material safety data sheet have to be considered.

For the disposal of electrical and electronic components (e.g. stroke measuring systems, proximity switches, etc.) country-specific legal regulations and specifications have to be kept.

## **15 Declaration of manufacture**

### **Manufacturer**

Römheld GmbH Friedrichshütte  
Römheldstraße 1-5  
35321 Laubach, Germany  
Tel.: +49 (0) 64 05 / 89-0  
Fax: +49 (0) 64 05 / 89-211  
E-mail: [info@roemheld.de](mailto:info@roemheld.de)  
[www.roemheld.com](http://www.roemheld.com)

### **Responsible person for the documentation:**

Dipl.-Ing. (FH) Jürgen Niesner, Tel.: +49(0)6405 89-0.

### **Declaration of manufacture of the products**

They are designed and manufactured in line with the relevant versions of the directives **2006/42/EC** (EC MSRL) and in compliance with the valid technical rules and standards.

In accordance with EC-MSRL, these products are components, that are not yet ready for use and are exclusively designed for the installation in a machine, a fixture or a plant.

According to the pressure equipment directives the products are not to be classified as pressure reservoirs but as hydraulic placing devices, since pressure is not the essential factor for the design, but the strength, the inherent stability and solidity with regard to static or dynamic operating stress.

The products may only be put into operation after it was assessed that the incomplete machine / machine, in which the product shall be installed, corresponds to the machinery directives (2006/42/EC).

The manufacturer commits to transmit the special documents of the products to state authorities on request.

The technical documentation as per appendix VII part B was prepared for the products.

Laubach, 02.01.24