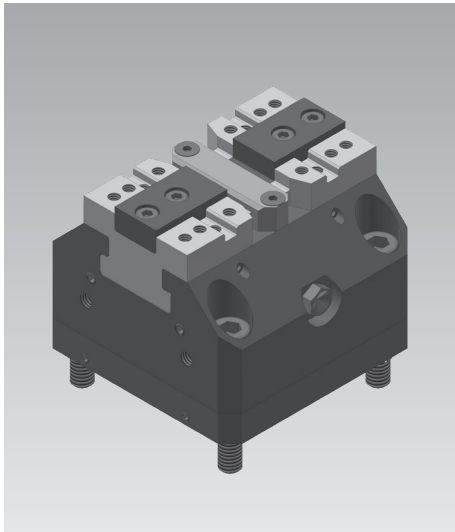




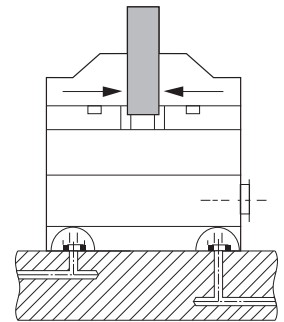
Concentric Vice - Power Clamp Centric

Block-type, double acting, max. operating pressure: pneumatic 9 bar, hydraulic 65 and 90 bar



Advantages

- Space-saving thanks to compact design
- Very high rigidity
- Low-wear due to hardened surfaces
- Centring precision ± 0.01 mm
- Repetitive accuracy ± 0.005 mm
- High clamping force also pneumatic
- Suitable for interior or exterior clamping
- Manifold mounting or pipe thread as standard
- Professional customer consultation



Application

These pneumatically or hydraulically operated centric vices can position and clamp workpieces with an accuracy of ± 0.01 mm.

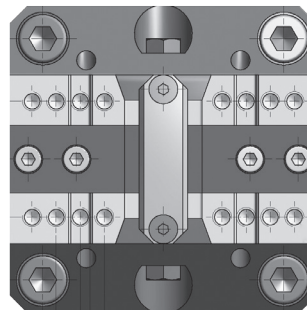
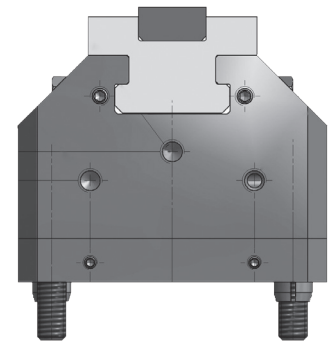
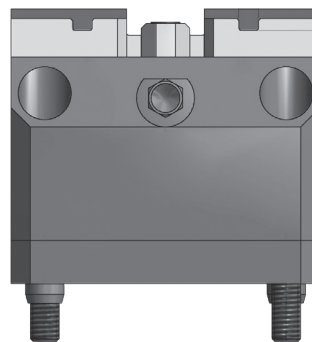
They are ideally suited for the series production of precision workpieces on single or multiple-clamping fixtures. The centric vices can be adapted to all common zero point clamping systems.

The double-acting cylinder function enables both interior and exterior clamping of workpieces.

Description

The housings of the centric vices have a square-shaped design. Therefore, a clamping piston with a large diameter can be installed from below, which enables an exceptionally high clamping force in the pneumatic centric vice.

The piston force is transmitted free of play to the two base jaws by a chuck piston synchronously and concentrically.



On request

- Clamping stroke monitoring
- Pneumatic contact control
- Connection for positive air pressure protection
- Port for central lubrication
- Quick-change jaws
- RFID chip

Type of operation		Pneumatic		Hydraulic	
		64 x 64 x 50	98 x 98 x 78	64 x 64 x 55	100 x 100 x 74
Dimensions	[mm]	64 x 64 x 50	98 x 98 x 78	64 x 64 x 55	100 x 100 x 74
Clamping force max.	[kN]	4	14	4.8	20.25
Max. operating pressure	[bar]	9	9	65	90
Min. operating pressure	[bar]	1	1	5	5
Stroke per jaw	[mm]	2.5	2.5	2.5	3
Clamping range	[mm]	0 – 55	0 – 90	0 – 55	0 – 90
Weight	[kg]	1.2	4	1.4	5