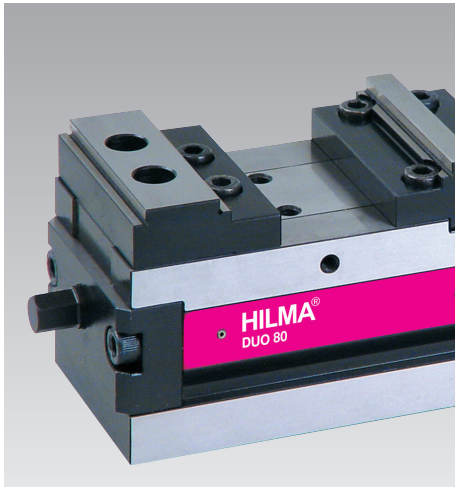




Accessories for Double Workholding Systems DUO
Clamping jaws and jaw openings accessories for operation



Clamping jaws

Double workholding system DUO 80 Version with 3rd-hand function

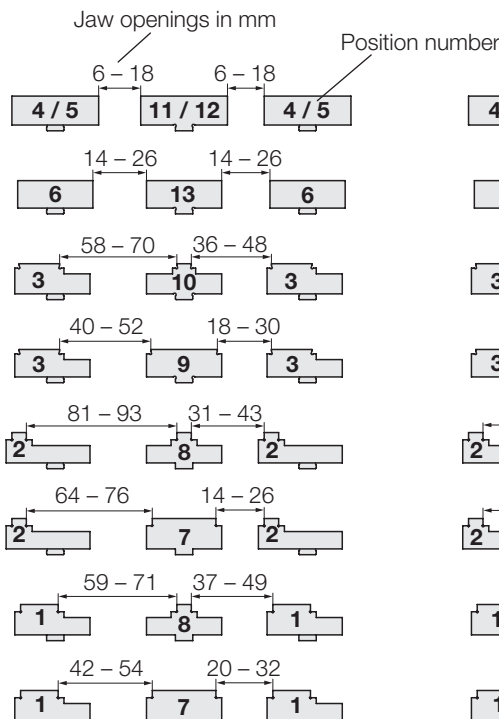
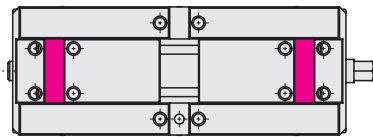
Position	Description		Part no.
1	Reversible step jaw, web 26 mm		938726901
2	Reversible step jaw, web 10 mm		938726902
3	Special grip jaw, web 28 mm		938726903
4	Reversible jaw, soft	Aluminium	938726905
		Steel	938726906
5	Reversible jaw, soft	Aluminium	938726907
		Steel	938726908
6	Block jaw 52 mm		938726909
7	Central step jaw, web 44 mm		938726911
8	Central step jaw, web 10 mm		938726912
9	Special grip jaw, centric, web 46 mm		938726913
10	Special grip jaw, centric, web 10 mm		938726914
11	Central jaw, soft	Aluminium	938726915
		Steel	938726916
12	Central jaw, soft	Aluminium	938726917
		Steel	938726918
13	Block jaw 52 mm, centric		938726919

Delivery of clamping jaws

All clamping jaws are supplied with the associated fixing screws. For clamping jaws with jaw inserts, please make your selection tailored to your application.

Jaw openings DUO 80 / 200

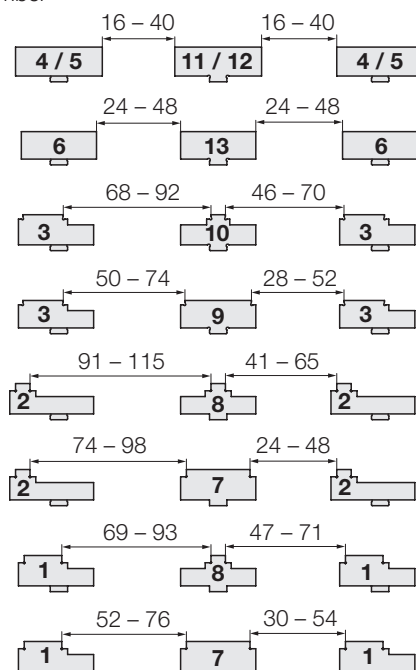
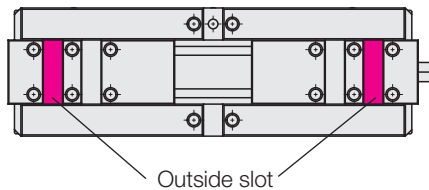
Stroke 12 mm per side



Jaw openings DUO 80 / 240

Outside slot

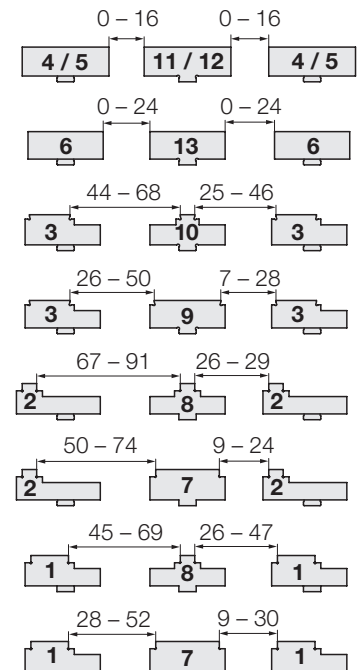
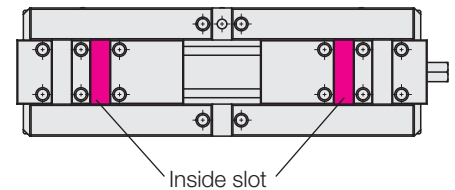
Stroke 24 mm per side



Jaw openings DUO 80 / 240

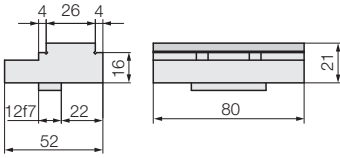
Inside slot

Stroke 24 mm per side

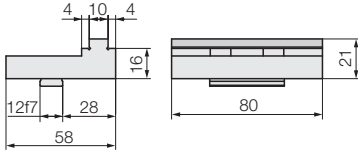


Accessories

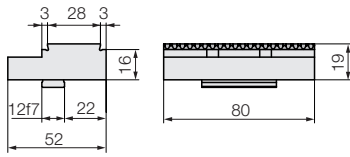
Clamping jaws and clamping jaws for jaw inserts



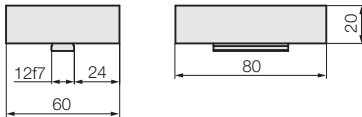
Position 1: Reversible step jaws, web 26 mm
Part no. 938726901



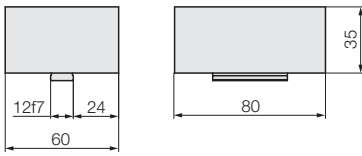
Position 2: Reversible step jaws, web 10 mm
Part no. 938726902



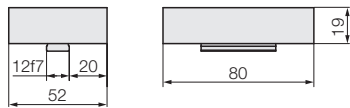
Position 3: Special grip jaws, movable, web 28 mm
Part no. 938726903



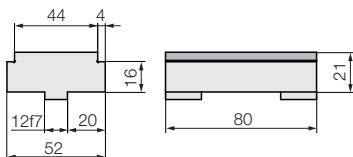
Position 4: Reversible jaws, soft, movable
Aluminium Part no. 938726905
Steel Part no. 938726906



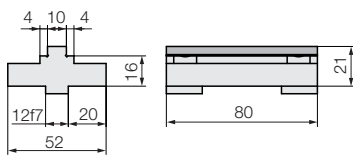
Position 5: Reversible jaws, soft, movable
Aluminium Part no. 938726907
Steel Part no. 938726908



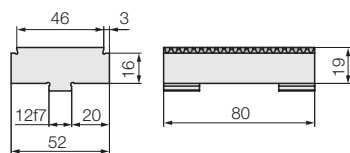
Position 6: Block jaws 52 mm, movable
Part no. 938726909



Position 7: Central step jaws, web 44 mm
Part no. 938726911



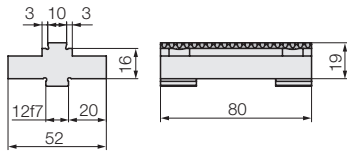
Position 8: Central step jaws, web 10 mm
Part no. 938726912



Position 9: Special grip jaws, centric, web 46 mm
Part no. 938726913

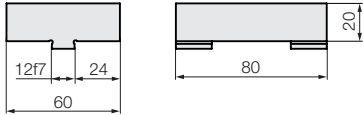
* Tolerance ± 0.01 mm
 ** Tolerance ± 0.02 mm

Clamping jaws and clamping jaws for jaw inserts Accessories for mounting, positioning and operation



Position 10: Special grip jaw, centric, web 10 mm

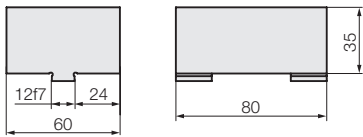
Part no. 938726914



Position 11: Central jaw, soft

Aluminium Part no. 938726915

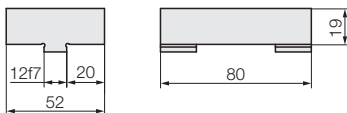
Steel Part no. 938726916



Position 12: Central jaw, soft

Aluminium Part no. 938726917

Steel Part no. 938726918



Position 13: Block jaws, centric

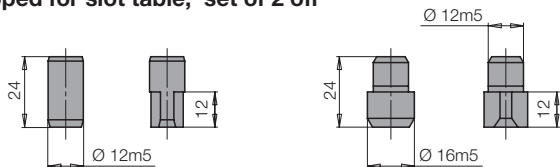
Part no. 938726919

Accessories for mounting and positioning

Mounting and positioning

Positioning pins

stepped for slot table, set of 2 off



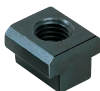
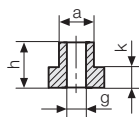
Type	Part no.	Ø [mm]
DUO 80	939184211	12/12
DUO 80	939184221	12/16

Key blocks

for positioning on machine tables and pallets with T-slots



Type	Part no.	Width
DUO 80	505080089	14h6
DUO 80	505080091	18h6



T-nuts

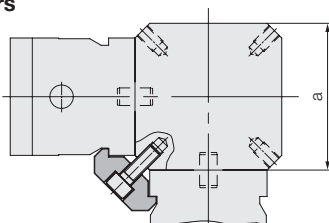
DIN 508, 1 set = 4 off

Type	Part no.	Thread	Width a
DUO 80	937773003	M10	14
DUO 80	937773005	M10	18

Set of clamping claws

consisting of 8 clamping claws and screws for fixation on clamping towers

a [mm]	Part no.
100	939174041
120	939174051



Clamping claws

with M10 fixing screws, set of 4 off



Type	Part no.	1 set = ... off
DUO 80	939174011	4

Double clamps

with M10 fixing screws, set of 2 off



Type	Part no.	1 set = ... off
DUO 80	939174021	2

Workpiece stop

for fixation to the base or to the jaws



Type	Part no.	Thread
DUO 80	939184111	M6

Torque wrench



Type	Part no.	Torque [Nm]
DUO 80	937926600	5-60

Socket

for torque wrench



Type	Part no.	SW
DUO 80	131240021	12